

SYSTEM CABINETS

KEY VAULTS

HIGH SECURITY

KEY CONTROL

A range of cabinets to control and track keys



This range of cabinets are manufactured and tested to the highest standards. Each cabinet has been appointed a strength and security test from gold through to bronze. Their high quality manufacture and multiple locking options make them ideal from domestic to high security commercial applications.

	GOLD
	SILVER
	BRONZE



Bronze System 30



Key Sign Out Tab

A range of cabinets to control and track keys

LOCKING OPTIONS

Unless stated the cabinet will be supplied with key locking as standard. The type of lock will depend upon its position within the range. Securikey recognise that there may be a requirement to add or alter the standard locking configuration. It is for this reason we offer the following alternatives.



ELECTRONIC SAFE LOCK WITH AUDIT TRAIL

Full function lock with multiple user codes, audit trail and time locking to prevent unauthorised entry during specific time zones. Available on all cabinets.



ELECTRIC KEY PAD

A heavy duty style lock with versions available from Revo and La Gard depending upon personal preference. All with multiple user codes. Available on all cabinets.



DIAL COMBINATION LOCK

A combination lock used extensively in the safe industry. Offers in excess of 1 million combinations.



PADLOCKING CAM LOCK

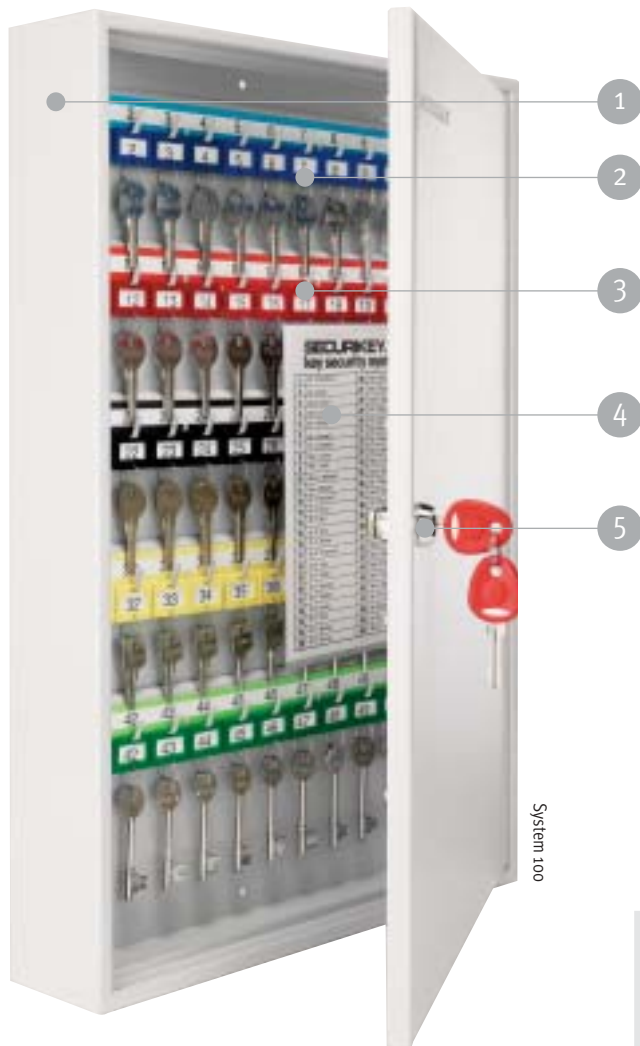
Designed to replace the standard Cam Lock, this option excepts a padlock with 8mm diameter shackle (max).



PUSH BUTTON LOCK

A push button lock similar to those used extensively throughout offices in the UK. This lock type is available in both deadbolt and slam lock

SYSTEM CABINETS



This range are manufactured to meet the needs of both domestic and light commercial applications. They provide the facility to control and track keys from 20 to 2080 in number and are used extensively throughout businesses worldwide. The cabinet is secured with a very high quality Securikey Cam Lock as standard and forms the entry level for our large range of Key Control Systems.

- Key control at affordable price
- Removable control index for out of hours piece of mind
- Adjustable hook bars to accommodate different key lengths
- Keys numbered and colour matched for quick identification
- Best suited to domestic and commercial use for key control and tracking

KEY:

- 1: Strongly made Steel Cabinets
- 2: Clever Key Tags allow keys to be colour and number matched
- 3: Clip-In Colour Bars
- 4: Removable Control Index
- 5: Security Lock with 2000 differs

SYSTEM CABINETS

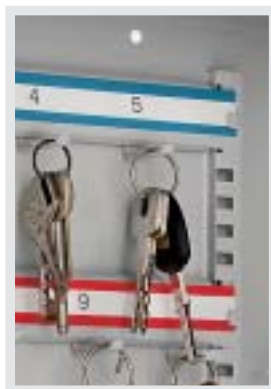
MODEL	KEY CAPACITY	DIMENSIONS (mm)	WEIGHT (kg)
System 20*	up to 20 keys	h: 260 x w: 185 x d: 75	2
System 30	up to 30 keys	h: 305 x w: 215 x d: 80	3
System 35	up to 35 keys	h: 320 x w: 245 x d: 85	4
System 48	up to 48 keys	h: 355 x w: 300 x d: 80	5
System 64	up to 64 keys	h: 450 x w: 300 x d: 80	6
System 100	up to 100 keys	h: 550 x w: 380 x d: 80	8
System 150	up to 150 keys	h: 550 x w: 380 x d: 140	13
System 200	up to 200 keys	h: 550 x w: 380 x d: 140	14
System 250	up to 250 keys	h: 550 x w: 380 x d: 205	19
System 300	up to 300 keys	h: 550 x w: 380 x d: 205	20
System 400	up to 400 keys	h: 550 x w: 730 x d: 140	25
System 500	up to 500 keys	h: 550 x w: 730 x d: 205	37
System 600	up to 600 keys	h: 550 x w: 730 x d: 205	38

*No control index

Please refer to back page for alternatively designed cabinets manufactured to bronze standard



1.5mm pressed and folded steel body



Adjustable Hook Bar feature with double spaced hooks option

The most comprehensive range of key control cabinets available. Each system is supplied with the necessary components to allow easy management and control of your keys and finished in a robust powder coat paint finish (RAL 7035).

DEEP SYSTEM CABINETS

MODEL	KEY CAPACITY	DIMENSIONS (mm)	WEIGHT (kg)
System 48/D	48 bunches	h: 350 x w: 300 x d: 120	6
System 100/D	100 bunches	h: 550 x w: 380 x d: 140	10
System 200/D	200 bunches	h: 550 x w: 730 x d: 140	17

KEY VAULT

KEY:

- 1: Removable hinge pin allows door to be upgraded
- 2: 3mm door thickness
- 3: Euro Profile Lock Case
- 4: Removable Control Index
- 5: Adjustable Hook Bar

A new range of cabinets to control, track and secure keys. This new product has been specifically designed to meet a growing need for increased security in the key control market. The Key Vault provides the tried and tested method of control and tracking of keys available in our System Cabinets range but with far greater security. The body is constructed from 2.5mm steel (max) with a 3mm door. They offer double the security and triple the strength of the System Cabinets, the Key Vault is best suited to commercial usage where the loss or misuse of a key can seriously damage the owners business.



Key Vault 100



2.5mm fabricated steel body



Euro Half Cylinder Locking



KEY VAULT

MODEL

Key Vault 30
Key Vault 48
Key Vault 100
Key Vault 200
Key Vault 400
Key Vault 600

DIMENSIONS (mm)

h: 305 x w: 230 x d: 70
h: 355 x w: 300 x d: 80
h: 550 x w: 380 x d: 80
h: 550 x w: 380 x d: 140
h: 550 x w: 730 x d: 140
h: 550 x w: 730 x d: 205

WEIGHT (kg)

6
7
13
19
30
47

DEEP KEY VAULT

MODEL

Key Vault 48 Deep
Key Vault 100 Deep
Key Vault 200 Deep

DIMENSIONS (mm)

h: 355 x w: 300 x d: 140
h: 550 x w: 380 x d: 140
h: 550 x w: 730 x d: 140

WEIGHT (kg)

8
15
21

Key Vault - providing protection well above the bronze Key Cabinet range. Designed to meet the requirements of insurance companies in preventing loss of keys associated with risk to valuables or property. As standard the Key Vaults are supplied with a half euro profile cylinder that can be easily replaced to integrate with an existing master key or security system. 2.5mm body and 3mm door.

HIGH SECURITY



Whilst being equipped in the same manner as the System Cabinets range for Key Control and organisation the similarities stop there. The high security range meet our top grading and offer the ultimate in protection. The construction is based upon the technology used to manufacture cash safes and offers 3 way bolt locking and a 6mm steel slab door. Equipped with an approved safe lock, this range is the best available in today's market.

- This unit is used extensively in many UK prestige motor dealers as well as police stations and banks providing the ultimate in secure key control
- Unparalleled key protection

KEY:

- 1: 3mm Steel Body
- 2: Adjustable Hook Bar
- 3: 6mm Steel Plate Door
- 4: Safe Lock
- 5: 20mm ø Locking Bolts
- 6: Clever Key Tags



Door Slab and Locking Bolt

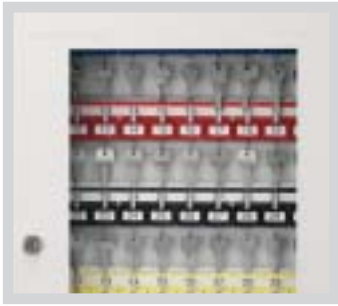


Electronic Lock Option

The High Security version is the most secure Key Filing Systems in our range. Construction is based around the technology used to manufacture safes. Locking is via a VdS approved safe lock. This Key Filing System is most secure when recessed into the wall. 3mm body and 6mm door.

HIGH SECURITY SYSTEMS

MODEL	KEY CAPACITY	DIMENSIONS (mm)	WEIGHT (kg)
System 60/HS	up to 60 Keys	h: 436 x w: 460 x d: 120	24
System 100/HS	up to 100 Keys	h: 636 x w: 460 x d: 120	32
System 150/HS	up to 150 Keys	h: 636 x w: 460 x d: 200	42
System 200/HS	up to 200 Keys	h: 636 x w: 460 x d: 200	43
System 300/HS	up to 300 Keys	h: 636 x w: 460 x d: 300	54



Key View System



Padlock Security System



Floor Standing Key Control



Emergency Key Box

PADLOCK SECURITY SYSTEMS - BRONZE STANDARD

These cabinets are specially designed to house padlocks and keys used to isolate switchgear or machinery. They are 'extra deep' with hooks spaced 60mm apart and staggered, to allow extra space for the hanging padlocks. Locking is provided by a Securikey Cam Lock and 2 keys. Alternatively, cabinets are available with dual cam lock's, combination lock or fitted with padlock hasp to special order.

PADLOCK SECURITY SYSTEMS

MODEL	KEY CAPACITY	DIMENSIONS (mm)	WEIGHT (kg)
System 24/PL	up to 24 Keys	h: 355 x w: 275 x d: 120	5
System 50/PL	up to 50 Keys	h: 550 x w: 380 x d: 140	9
System 100/PL	up to 100 Keys	h: 550 x w: 730 x d: 140	14

PORTABLE SYSTEMS - BRONZE STANDARD

Ideal for security companies with mobile patrols, these portable key cabinets are supplied with a strong carrying handle. They have all the features of our fixed cabinets and come in four sizes.

PORTABLE SYSTEMS

MODEL	KEY CAPACITY	DIMENSIONS (mm)	WEIGHT (kg)
System 20/H*	up to 20 Keys	h: 255 x w: 190 x d: 70	2
System 30/H	up to 30 Keys	h: 305 x w: 230 x d: 70	2
System 35/H	up to 35 Keys	h: 320 x w: 245 x d: 85	2
System 63/H	up to 63 Keys	h: 305 x w: 230 x d: 110	5

*No control index

KEY VIEW SYSTEMS - BRONZE STANDARD

Securikey's Key View cabinets allow a clear visual check on key status, without unlocking the door. Fitted with plexi glass clear insert.

KEY VIEW SYSTEMS

MODEL	KEY CAPACITY	DIMENSIONS (mm)	WEIGHT (kg)
System 24/G	up to 24 Keys	h: 355 x w: 275 x d: 80	5
System 32/G	up to 32 Keys	h: 450 x w: 300 x d: 80	5
System 50/G	up to 50 Keys	h: 550 x w: 380 x d: 80	8

FLOOR STANDING KEY CONTROL - GOLD STANDARD

Large capacity key cabinets manufactured from heavy gauge steel. Key panels are on telescopic slides for easy access and storage. The door is flush closing with a heavy duty safe lock. Models 960/1280 have three locking bolts. Models 1560/2080 have five locking bolts and double walled fire insulation to VDMA STD. 24229

FLOOR STANDING KEY CONTROL

MODEL	KEY CAPACITY	DIMENSIONS (mm)	WEIGHT (kg)
System 960	up to 960 Keys	h: 1000 x w: 650 x d: 560	300
System 1280	up to 1280 Keys	h: 1000 x w: 650 x d: 560	300
System 1560	up to 1560 Keys	h: 1200 x w: 650 x d: 560	310
System 2080	up to 2080 Keys	h: 1500 x w: 810 x d: 560	325

EMERGENCY KEY BOX

Constructed from steel with a breakglass front, these Emergency Key Boxes are designed to hold a restricted key near a locked door for emergency use only. A choice of locking options are available including a cylinder lock or security seal. Model KO supplied with hammer and chain.

EMERGENCY KEY BOX

MODEL	DIMENSIONS (mm)
Model K1 - Fitted with cylinder lock	h: 150 x w: 122 x d: 35
Model Ko - Locking by security seal	h: 150 x w: 122 x d: 35

For further information on the complete range of Securikey products including Fire Stor Secure Cabinets, Security Boxes, 'Master' Padlocks, Security/Safety Mirrors, Cash Safes and Self-Retracting Key Reels.

Please contact your Securikey stockist.

Securikey Limited, PO BOX 18, Aldershot, Hampshire GU12 4SL

Telephone: 01252 311888

Facsimile: 01252 343950

Email: enquiries@securikey.co.uk

Website: www.securikey.co.uk

