

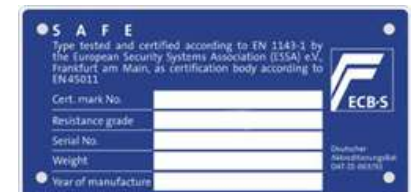
KeySecure

VICTOR Euro Grade 1 Safes



- Certified to EN1443-1 – Euro Grade I
- £10,000 Cash Rating (x10 For Valuables) VICTOR-1
- AiS Approved
- Comes with double-bit high security lock with 2 keys
- Available with Electronic Safe Lock
- 3-walled Door with 3-sided bolt locking. Running bar behind hinge
- Door opening angle 180 °
- Double Walled Body
- Fixing points in the centre of the rear and floor for fixing.

Product Code	Ext Dimensions (H x W x D)	Int Dimensions (H x W x D)	Weight	Shelves	Volume
VICTOR 1-1	400 X 400 X 270 mm	350 x 341 x 157 mm	39Kg	1	18 L
VICTOR 1-2	400 x 420 x 420 mm	350 x 361 x 307 mm	55Kg	1	36 L
VICTOR 1-3	500 x 500 x 420 mm	450 x 441 x 307 mm	71Kg	1	60 L
VICTOR 1-4	650 x 500 x 420 mm	600 x 441 x 307 mm	85Kg	1	81L
VICTOR 1-5	800 x 500 x 420 mm	750 x 441 x 307 mm	100Kg	1	101L
VICTOR 1-6	1300 x 500 x 420 mm	1250 x 441 x 307 mm	150Kg	3	169L



Great Products – Great Prices

All prices are Ex Works & Vat unless otherwise stated